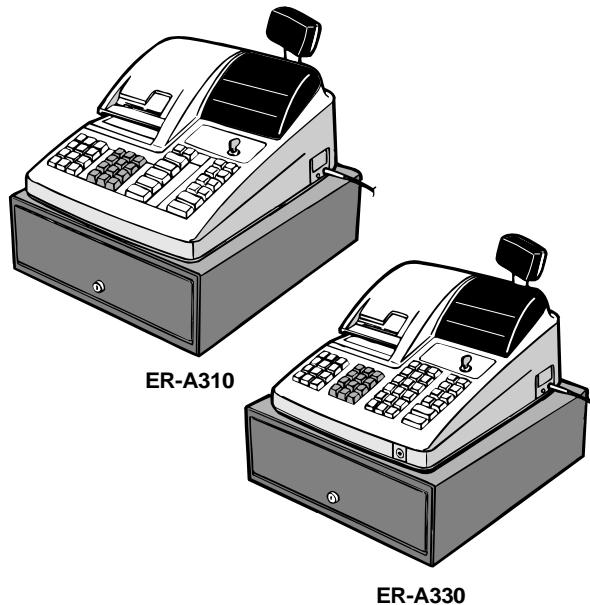


SHARP INSTALLATION MANUAL

CODE: 00ZERA310VIME



ELECTRONIC CASH REGISTER

ER-A310 MODEL ER-A330

SRV Key : LKGIM7113RCZZ
PRINTER: ER-A310 : CR-510
ER-A330 : UCR-812A
(For "V" version)

CONTENTS

CHAPTER 1.	GENERAL	1
CHAPTER 2.	LIST OF OPTIONS	1
CHAPTER 3.	REMOVING THE TOP CABINET (For ER-A310 & ER-A330)	2
CHAPTER 4.	REMOVING THE BOTTOM CABINET (Only for ER-A330)	3
CHAPTER 5.	REMOVING THE PRINTER UNIT (For ER-A310 & ER-A330)	4
CHAPTER 6.	REMOVING THE MAIN PWB (For ER-A310 & ER-A330)	4
CHAPTER 7.	REMOTE DRAWER: ER-04DW (For ER-A310 & ER-A330)	5
CHAPTER 8.	DRAWER FIXING KIT: DKIT-8670RCZZ (Only for ER-A330)	6
CHAPTER 9.	SHIELD PLATE KIT: DKIT-8666BHZZ (Only for ER-A330)	7
CHAPTER 10.	ONE HOLE CASHIER KEY KIT: DKIT-8669BHZZ (For ER-A310 & ER-A330)	7
CHAPTER 11.	KEY TOP KIT: ER-11KT7/12KT7/22KT7/11DK7/51DK7 (For ER-A310 & ER-A330)	8

Parts marked with "!" is important for maintaining the safety of the set. Be sure to replace these parts with specified ones for maintaining the safety and performance of the set.

SHARP CORPORATION

This document has been published to be used
for after sales service only.
The contents are subject to change without notice.

CHAPTER 1. GENERAL

This manual describes the ER-A310/A330 disassembly procedures and the option attachment procedures. For assembly procedures, reverse the disassembly procedures. For attachment of options which do not require special descriptions, descriptions are omitted.

Note for operations

- Before operation, ground the operator's body and perform other necessary measure against static electricity.
- During operations, disconnect the AC cord from the outlet.
- After completion of operations, connect the connectors.
- After completion of operations, be sure to perform the master reset.

Master reset (All memory clear)

There are two possible methods to perform a master reset.

- MRS-1

Used to clear all memory contents and return machine back to its initial settings. return keyboard back to default. for default keyboard layout.

Procedure-1 (with SRV key)

- 1) Unplug the AC cord from the wall outlet.
- 2) Set the MODE switch to the (SRV) position.
- 3) Plug in the AC cord to the wall outlet.
- 4) While holding down JOURNAL FEED key, turn to (SRV) position from (SRV) position.

Procedure-2 (without SRV key)

- 1) Turn the mode switch to the (REG) position.
- 2) Ensure the batteries are not installed in the battery compartment and insert the plug into the outlet.
- 3) The right most decimal point will blink for a few seconds.
- 4) The register will sound three beeps.
- 5) The register will display " L 000 ."

CHAPTER 2. LIST OF OPTIONS

1. Sales options

No.	NAME	MODEL	DESCRIPTIONS
1	REMOTE DRAWER	ER-04DW	5B/8C
2	COIN CASE	ER-58CC	5B/8C
3	COIN CASE COVER	ER-03CV	
4	KEY TOP KIT	ER-11KT7	1 × 1 key top
		ER-12KT7	1 × 2 key top
		ER-22KT7	2 × 2 key top
		ER-11DK7	1 × 1 dummy key
		ER-51DK7	5 × 1 dummy key

2. Service options

No.	NAME	PARTS CODE	PRICE RANK	DESCRIPTIONS
1	SRV KEY	LKGIM7113RCZZ	AK	
2	MODE KEYGRIP COVER	LKGIM7126RCZZ	AL	OP key only
3	DRIP-PROOF KEYBOARD COVER	GCQVH7126BHZZ	BE	
4	DRIP-PROOF MODE SWITCH COVER	GCQVH7127BHZZ	BA	
5	SHIELD PLATE KIT	DKIT-8666BHZZ	BL	Only for ER-A330
6	ONE HOLE CASHIER KEY KIT	DKIT-8669BHZZ	BT	
7	DRAWER FIXING KIT	DUNT-8670BHZZ	AT	Only for ER-A330

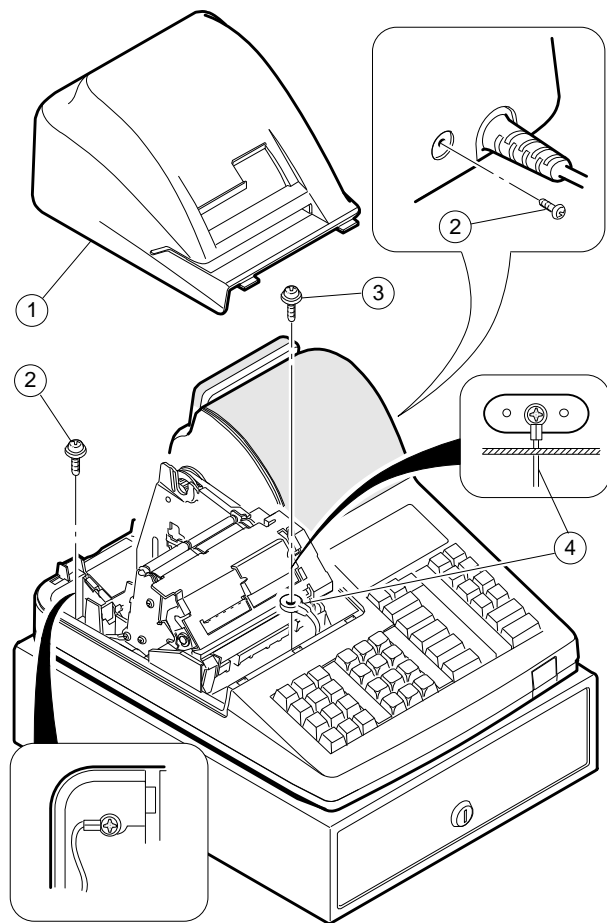
3. Supplies

No.	NAME	PARTS CODE	PRICE RANK	DESCRIPTIONS
1	ROLL PAPER	DPAPR1006CSZZ	AR	
2	INK ROLLER (ER-A310)	NRCLR6652RCZZ	AZ	
3	INK ROLLER (ER-A330)	NRCLR6638RCZZ	AY	
4	INK FOR STAMP	UINK-1001CCZZ	AK	

CHAPTER 3. REMOVING THE TOP CABINET (For ER-A310 & ER-A330)

1. ER-A310

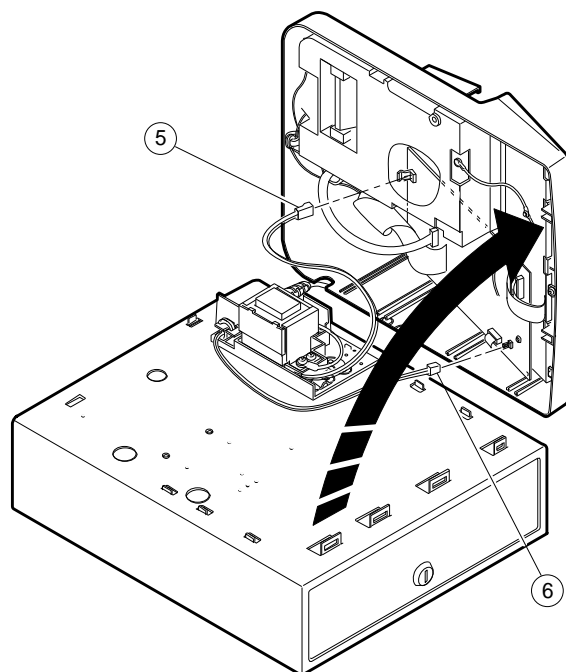
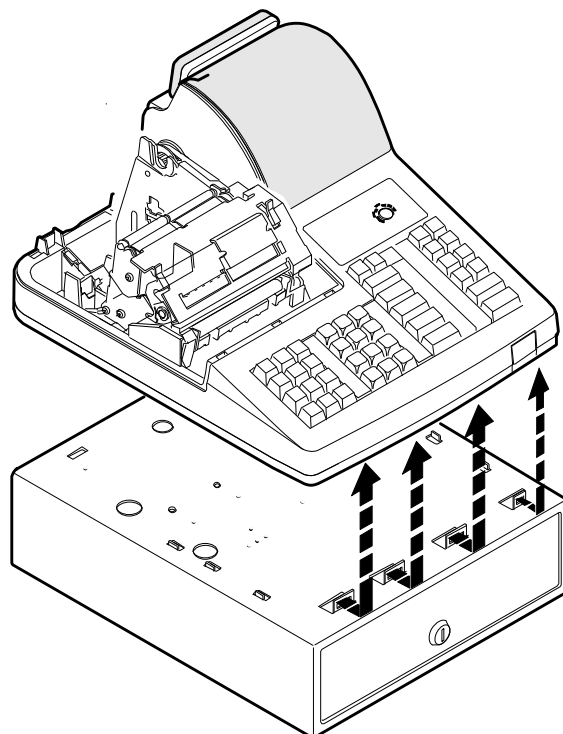
- 1) Remove the printer cover 1 .
- 2) Remove the two screws 2 .
- 3) Remove the screw 3 and grounding wire 4 .



- 4) Separate the top cabinet and the drawer unit.

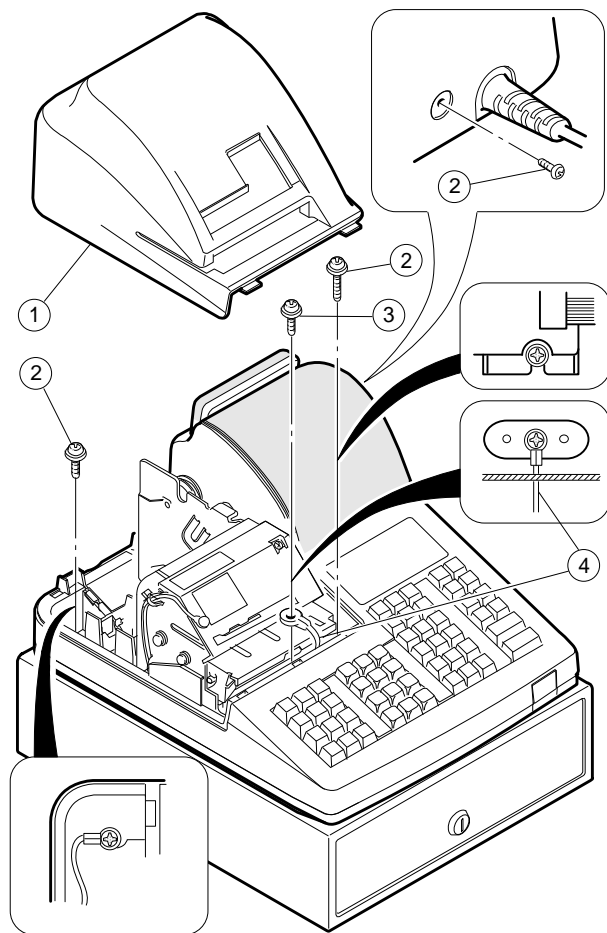
Note: Transformer cable 5 and the drawer cable on the drawer unit are connected to the main PWB on the top cabinet. Be careful when separating them from the drawer unit.

- 5) Remove transformer cable 5 and drawer cable 6 from the main PWB.



2. ER-A330

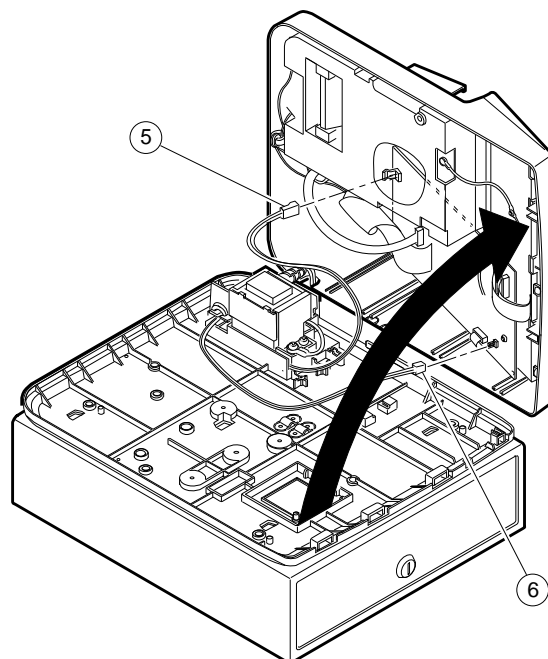
- 1) Remove the printer cover 1 .
- 2) Remove the three screws 2 .
- 3) Remove the screw 3 and grounding wire 4 .



- 4) Separate the top cabinet and the bottom cabinet.

Note: Transformer cable 5 and the drawer cable on the bottom cabinet are connected to the main PWB on the top cabinet. Be careful when separating them from the bottom cabinet.

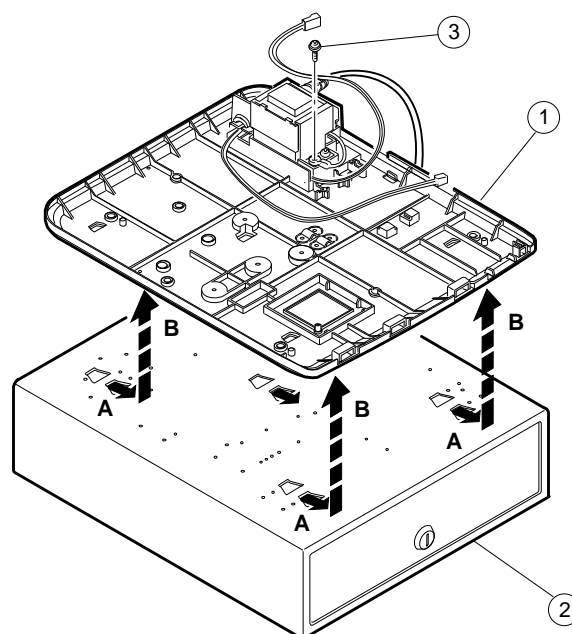
- 5) Remove transformer cable 5 and drawer cable 6 from the main PWB.



CHAPTER 4. REMOVING THE BOTTOM CABINET (Only for ER-A330)

1. ER-A330

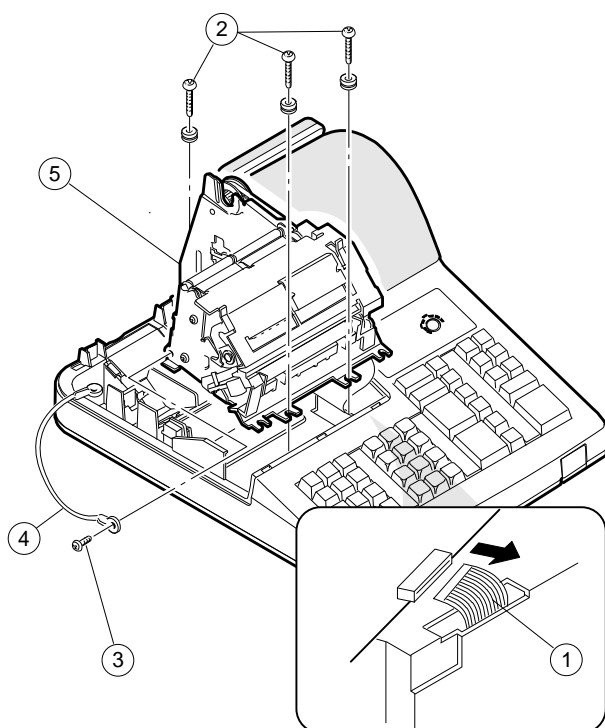
- 1) Remove the top cabinet.
- 2) Remove the bottom cabinet 1 from the drawer unit 2 .



CHAPTER 5. REMOVING THE PRINTER UNIT (For ER-A310 & ER-A330)

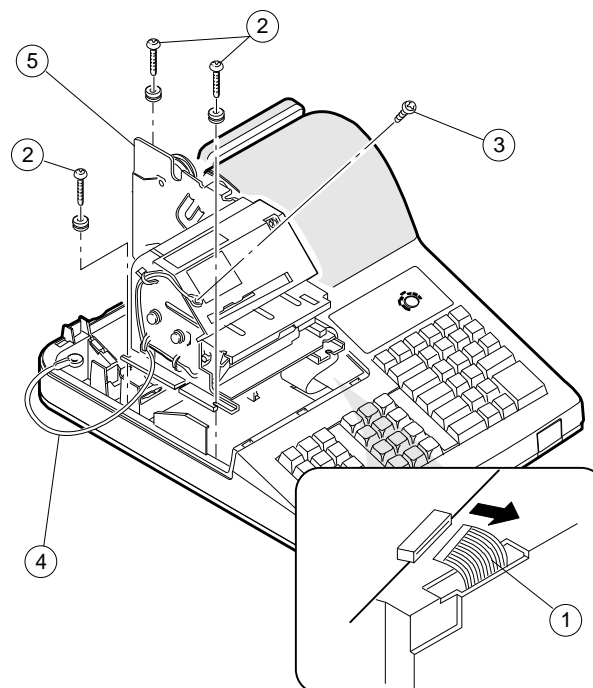
1. ER-A310

- 1) Remove the top cabinet.
- 2) Remove the printer cable 1 from the main PWB.
- 3) Remove the three screws 2 .
- 4) Remove the screw 3 and grounding wire 4 .
- 5) Remove the printer unit 5 from the top cabinet.



2. ER-A330

- 1) Remove the top cabinet.
- 2) Remove the printer cable 1 from the main PWB.
- 3) Remove the three screws 2 .
- 4) Remove the screw 3 and grounding wire 4 .
- 5) Remove the printer unit 5 from the top cabinet.



CHAPTER 6. REMOVING THE MAIN PWB (For ER-A310 & ER-A330)

1. ER-A310/A330

- 1) Remove the top cabinet.
- 2) Remove the printer unit.
- 3) Remove the following connector cables from the main PWB.

Dry battery cable 1

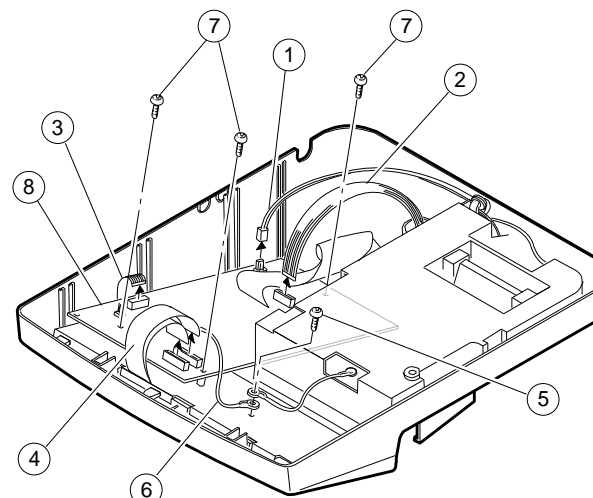
Pop up display cable 2

Note: The pop-up cable is fixed with the holder not to make contact with the heat radiating plate on the main PWB. Be careful of it when installing.

Mode switch cable 3

Keyboard cable 4

- 4) Remove the screw 5 and grounding wire 6 .
- 5) Remove the free screws 7 and main PWB 8 .



CHAPTER 7. REMOTE DRAWER: ER-04DW (For ER-A310 & ER-A330)

CAUTION:

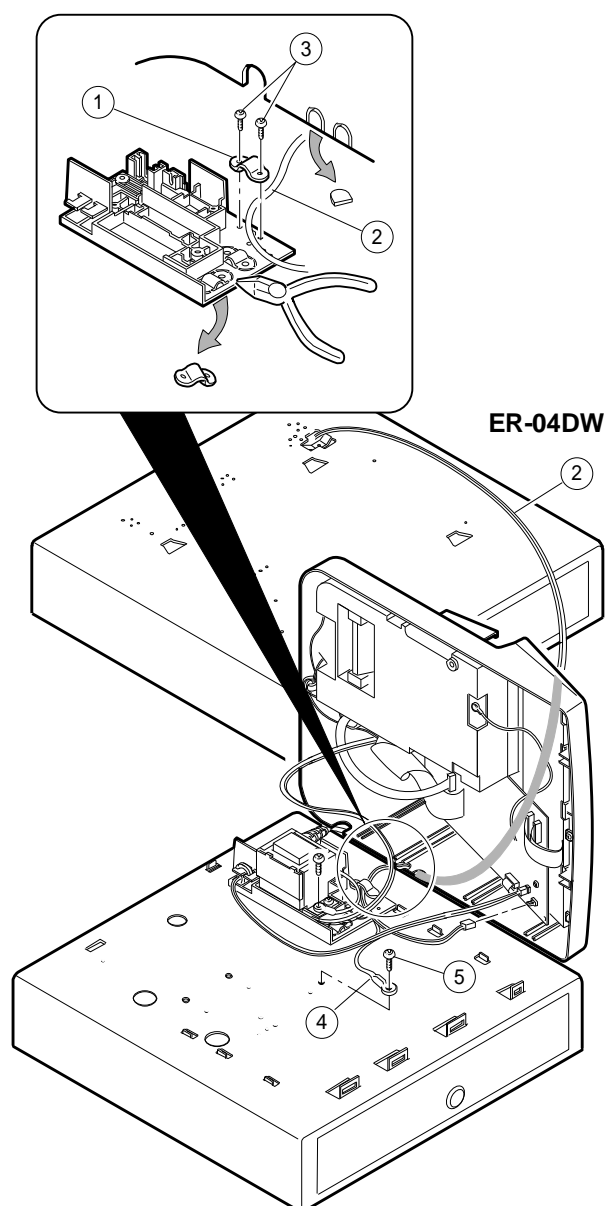
The drawer unit should be securely fitted to the supporting platform to avoid instability when the drawer is open.

1. Outline

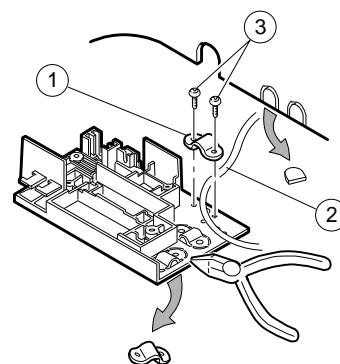
The ER-A310/A330 allows connection of one remote drawer ER-04DW.

2. Installation procedure for ER-A310

- 1) Remove the top cabinet.
- 2) Connect the drawer cable to the drawer connector (CN16) on the main PWB.
- 3) Use nippers to cut off drawer cable binding holder 1 on the trans cover, and bind drawer cable 2 of the ER-04DW. Screw 3 used in this case is an accessory of the ER-04DW.



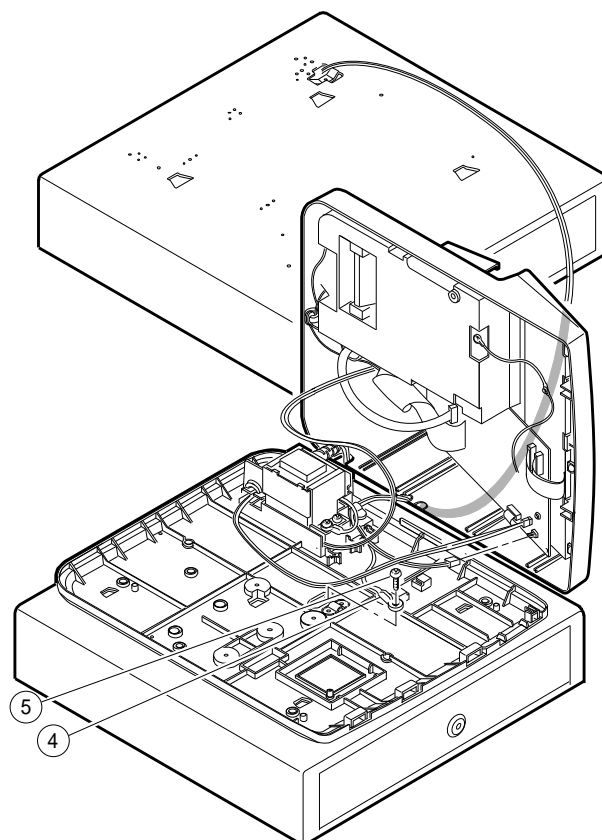
- 4) Use nippers to cut off the drawer cable split pin of the top cabinet, and attach the top cabinet.



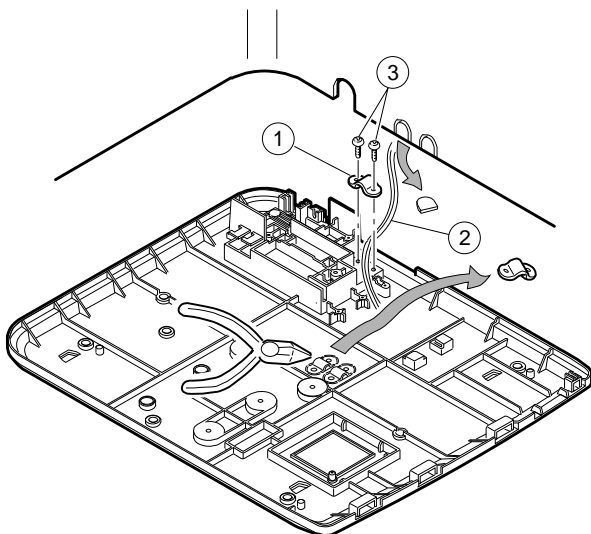
- 5) Fix ground wire 4 of the ER-04DW on the standard drawer with screw 5. Screw 5 used in this case is an accessory of the ER-04DW.

3. Installation procedure for ER-A330

- 1) Remove the top cabinet.
- 2) Connect the drawer cable to the drawer connector on the main PWB.
- 3) Use nippers to cut off drawer cable binding holder 1 on the bottom cabinet, and bind drawer cable 2 of the ER-04DW. Screw 3 used in this case is an accessory of the ER-04DW.



- 4) Use nippers to cut off the drawer cable split pin of the top cabinet, and attach the top cabinet.



- 5) Fix ground wire 4 of the ER-04DW on the standard drawer with screw 5 .
Screw 5 used in this case is an accessory of the ER-04DW.

CHAPTER 8. DRAWER FIXING KIT: DKIT-8670BHZZ (Only for ER-A330)

* For the ER-A310, standard provision.

The drawer fixing kit is used for securing the cash drawer when installing separately from the ECR main unit.

By using two of brackets, the drawer box can be protected from drifting especially when it is filled with coins.

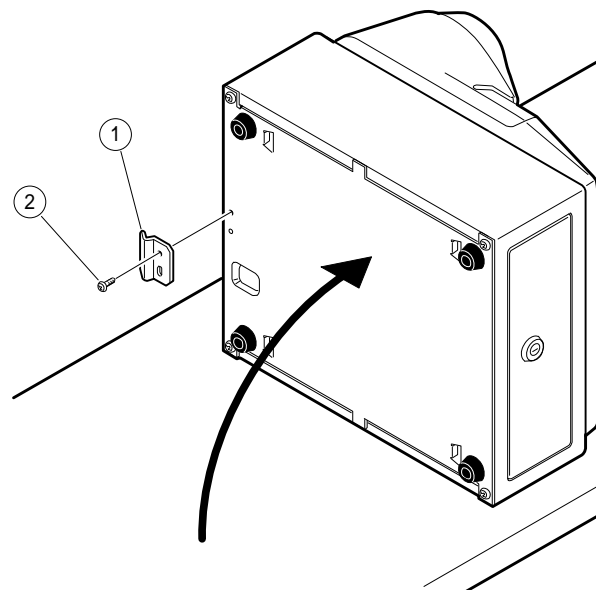
1. Parts list

KIT CODE: DKIT-8670BHZZ

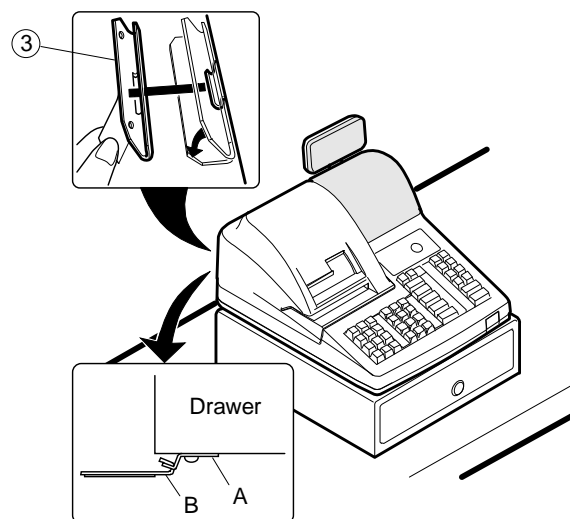
No.	Parts code	Description	Price rank	Q'ty
1	LANGK7612BHZZ	Fixing angle bracket-A	AF	1
2	LANGK7613BHZZ	Fixing angle bracket-B	AN	1
3	XHPSD30P08000	Screw (M3 × 8)	AA	1

2. Installation procedure

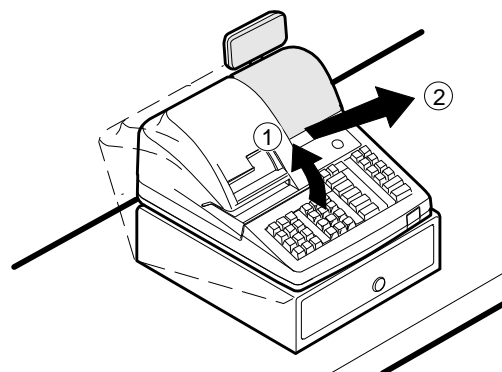
- 1) Fix the fixing angle bracket-A 1 to the back of the drawer with the fixing screw 2 .



- 2) Remove the dust from the part to attach the fixing angle bracket-B 3 to.
3) Peel off the adhesive tape on the fixing angle bracket-B 3 .
4) Hook the fixing angle bracket-A 1 of the drawer into the above-mentioned fixing angle bracket-B 3 and attach the fixing angle bracket-B 3 to the platform.



* To move the register, lift up the front of the drawer and pull it forward.



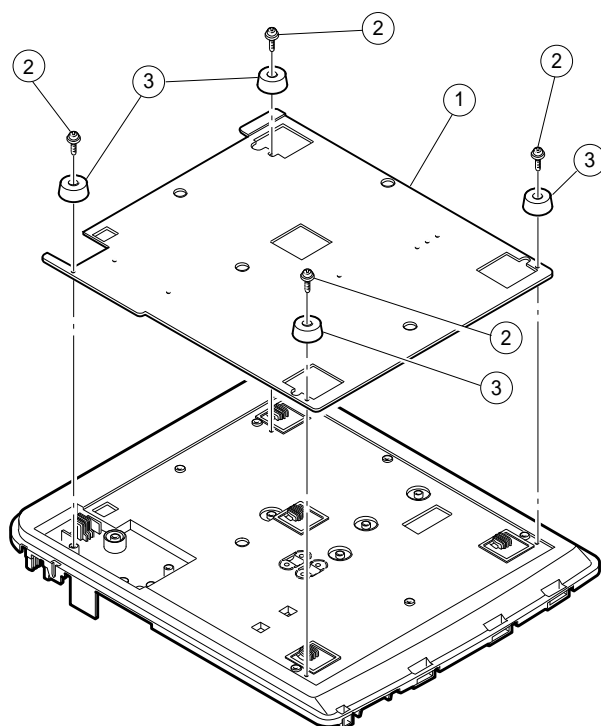
CHAPTER 9. SHIELD PLATE KIT: DKIT-8666BHZZ (Only for ER-A330)

1. Component list

No.	PARTS CODE	DESCRIPTION	PRICE RANK	Q'TY
1	LCHSM6705BHZZ	MAIN SHASSIS	BG	1
2	TLABH7006BHZA	CAUTION CARD	AD	4
3	PGUMM6696BHZZ	GUM LEG	AE	4
4	XUPSD30P12X00	SCREW	AA	4

2. Installation procedure

- 1) Remove the top cabinet.
- 2) Remove the bottom cabinet.
- 3) Install the shield plate 1 and attach four gum legs 3 to the shield plate and fix them with screws 2.
- 4) Replace the top cabinet.



CHAPTER 10. ONE HOLE CASHIER KEY KIT: DKIT-8669BHZZ (For ER-A310 & 330)

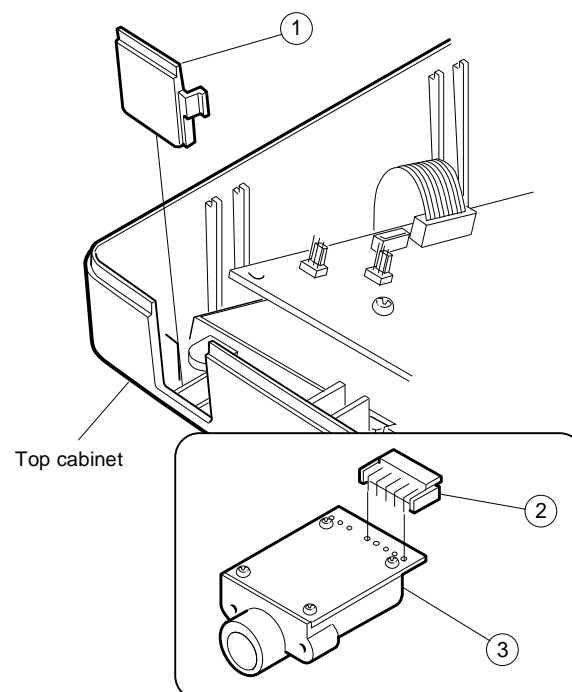
* Standard provision for the TQ, TR, and TS versions of the ER-A330.

1. Parts list

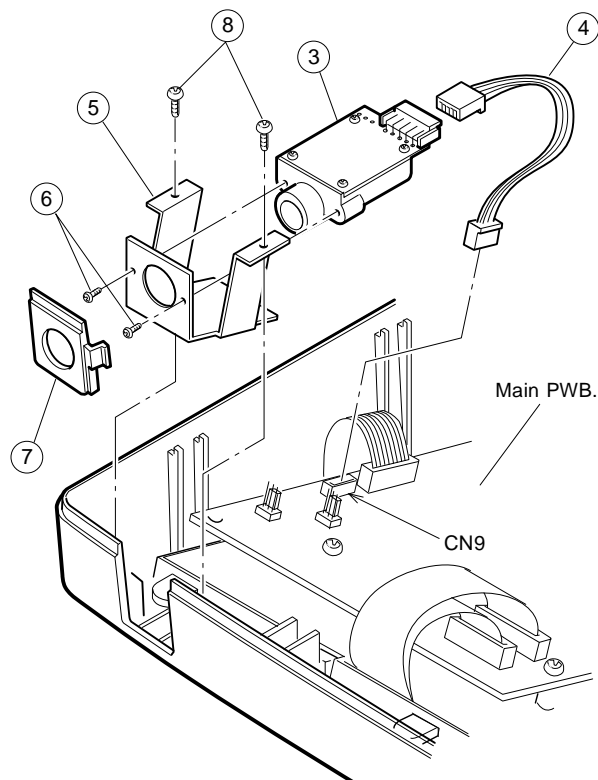
No.	PARTS CODE	DESCRIPTION	PRICE RANK	Q'ty
1	LKGIW7375BHZZ	CASHIER KEY BODY	BG	1
2	QCNCW2423BH0E	CASHIER KEY CONNECTOR (5P)	AE	1
3	LKGIM7377BH01	CASHIER KEY No.1	AV	2
4	LKGIM7377BH02	CASHIER KEY No.2	AV	2
5	LKGIM7377BH03	CASHIER KEY No.3	AV	2
6	LKGIM7377BH04	CASHIER KEY No.4	AV	2
7	LKGIM7377BH05	CASHIER KEY No.5	AV	2
8	LKGIM7377BH06	CASHIER KEY No.6	AV	2
9	QCNCW-7818BHZZ	CASHIER KEY CABLE (5P)	AN	1
10	LANGT7602BHZZ	CASHIER KEY SWITCH ANGLE	AM	1
11	XJSSD26P08000	SCREW	AA	2
12	XEBSD30P08000	SCREW	AA	2
13	GFTAF6922BHZZ	CLERK COVER "B"	AG	1

2. Installation procedure

- 1) Remove the top cabinet.
- 2) Remove the clerk cover "A" 1 from the top cabinet.
- 3) Solder the clerk connector (5P) 2 to the clerk switch body 3.



- 4) Connect the clerk key cable (5P) 4 to the clerk switch body 3 .
- 5) Attach the clerk angle 5 to the clerk switch body 3 and fix with screw 6 (XJSSD26P08000).
- 6) Install the clerk switch body 3 to the clerk cover "B" 7 then install it the top cabinet and fix with screws 8 (XEBSD30P08000).



- 7) Connect the clerk key cable (5P) 4 to location No. NC9 on the main PWB.

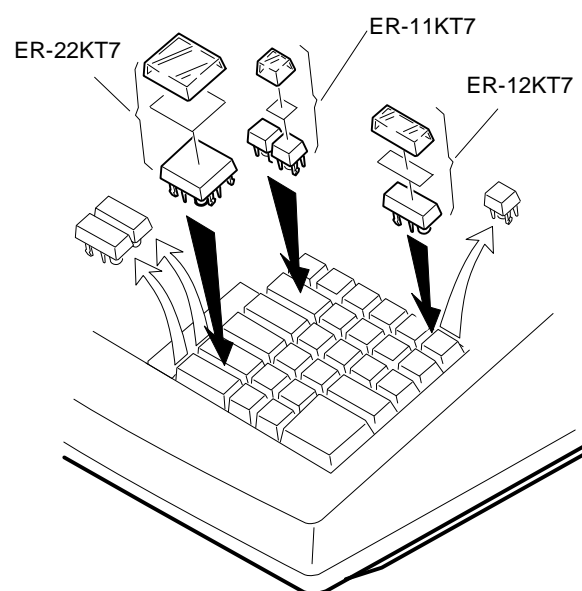
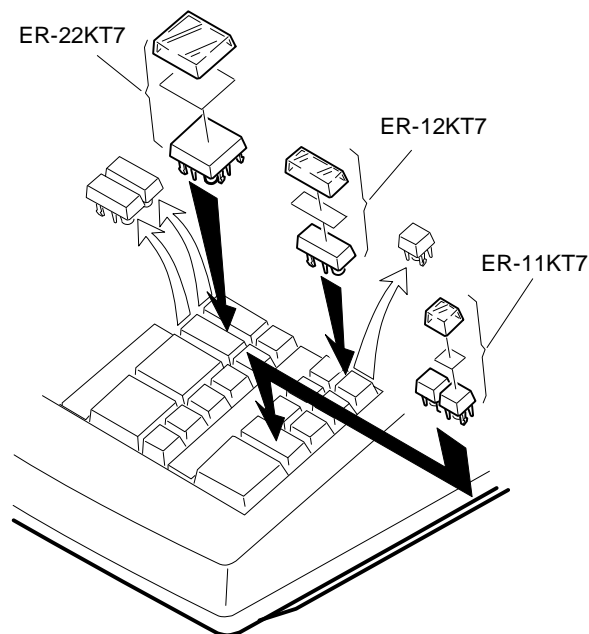
CHAPTER 11. KEY TOP KIT

1. Outline

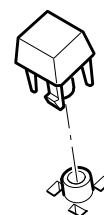
The ER-A310/A330 employs the following key top (option) to allow additional installation of the key top and change in the key layout.

MODEL NAME	DESCRIPTION
ER-11KT7	1 × 1 Key top
ER-12KT7	1 × 2 Key top
ER-22KT7	2 × 2 Key top
ER-11DK7	1 × 1 Dummy key
ER-51DK7	5 × 1 Dummy key

2. Installation procedure

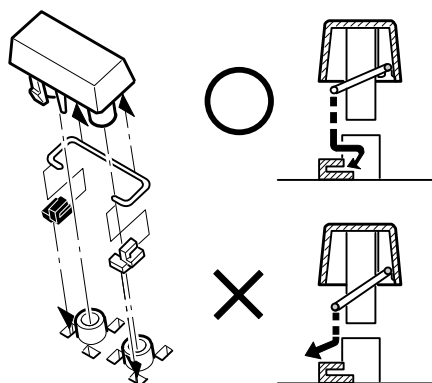


1 ER-11KT7

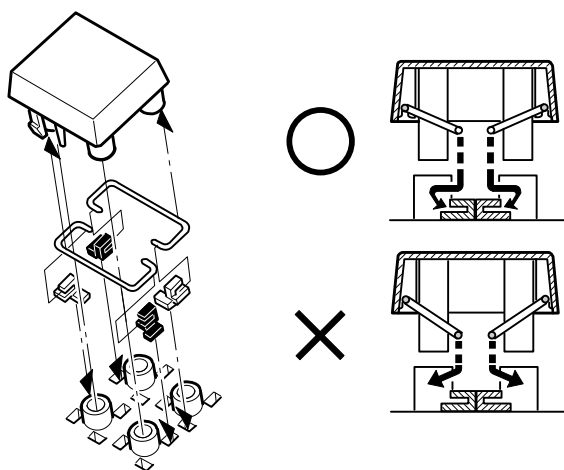


2 ER-12KT7, ER-22KT7

Note: There are black spacers and white spacers. Refer to the figure before for attaching them.



- Attach the black spacer to the left lower side, and the white spacer to the right lower side.



3 ER-11DK7, ER-51DK7

