

What is the Easy Programming Tool?

The Easy Programming Tool is an application program for various settings of your ECR. It is helpful particularly when you wish to preset text data such as item names because you can input data by using your PC. This software works with Microsoft Windows 98/Me/2000/XP.

The Easy Programming Tool provides the following functions:

- a) Programming the settings of ECR on your PC.
- b) Receiving program data from the ECR
- c) Sending program data to the ECR
- d) Modifying the default ECR settings on your PC
- e) Receiving the program data from ECR and modifying it
- f) Modifying the program data saved in your PC
- g) Saving the program data you have programmed on your PC
- h) Creating a graphic logo on your PC
- i) Sending the graphic logo to ECR

Operating Environment

This software requires these minimum PC requirements:

- Hardware:
- IBM PC or 100% compatible
 - 24 MB RAM
 - 40 MB free hard disk space.

- Operating System:
- Microsoft Windows 98/Me/2000/XP

Functions

This tool provides the functions indicated below:

- 1) Creating settings of the ECR
You can create settings for the ECR on your PC and send it to the ECR.
- 2) Maintaining the settings
You can receive the settings from the ECR, modify them and send them back to the ECR.
The available settings include :
- a) [Department](#) programming
 - b) [PLU](#) programming
 - c) Function programming (%, [Discount](#), Total, etc.)
 - d) [Cashier](#) programming
 - e) Tax programming
 - f) Other parameters, etc.
- 3) Creating graphic logo data
You can create unique graphic logos such as your store name and send it to the ECR.

Graphic logo

- Size: 288 dots (w) x 130 dots (h)
Color: black and white
Black Rate
- Total black rate: 35% or lower
 - Local black rate: The black rate of a horizontal dot line is 55% or less.

Installation of the Easy Programming Tool

You can install the Easy Programming Tool, using the Setup.exe Installer program.

1. Start your PC.
2. Locate the Setup.exe installer program using Windows Explorer and double-click the excutable.
3. Follow the instruction of the Installer program.

Note:

The Installer program installs DLL (Dynamic Link Library) files necessary for software execution into the

system area. Once the DLL files are installed, you must restart the computer and prior to using the software.

Settings

You can change the program data of the ECR using one of the three procedures below:

Case A: Programming the settings for the first time

1. Click [Click here when you start initial programming].
2. Select the item you want to program from the menu, and change the settings on your PC.
3. Select [Send/Save Button] to send the data from PC to ECR.

Case B: Modifying the setting data in ECR

1. Click [Click here when you modify current programming].
2. Select the item you want to modify, and click [from ER-A410/ER-A420] to receive the data from ECR.
3. Modify the settings on your PC.
4. Select [Send/Save Button] to send the data from PC to ECR.

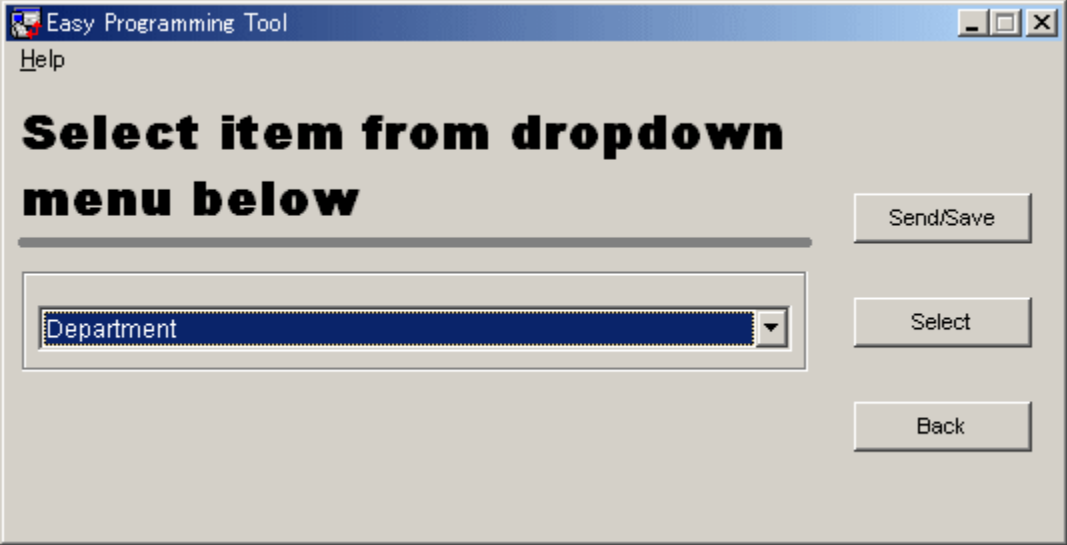
Case C: Modifying the settings on your PC

1. Click [Click here when you modify current programming].
2. Select the item you want to modify, and click [from your PC] to receive the data from ECR.
3. Modify the settings on your PC.
4. Select [Send/Save Button] to send the data from the PC to the ECR.

Software operation

The setting screen of the Easy Programming Tool consists of several sub-screens called "Cards." Each card consists of several objects.

Default Screen



[Card list]

The right-hand button displays a list of the settings available. Select the item you wish to modify and the next screen will appear. You can program items except the DEPT, PLU, and FUNCTION in this screen. The items of DEPT, PLU, and FUNCTION are listed. Click the item, then the setting screen appears.

[Select button]

Press this button to select a specific item. After the item is selected, the next screen appears.

[Send/Save button]

Press this button to send the settings to the ECR or to save the settings on the hard disk.

The basic operation for making program settings is as follows:

Select the item by using the mouse and/or keyboard

- > Modify the settings of the selected area
- > Press the [Apply Button]
- > Select the next item by using the mouse and/or keyboard.

Easy Programming Tool

EditHelp

Departments list

Record Range : 01 - 20

Dept. code	Text	Unit price	Group number	Commission group number	Tax 1 ▲
1	DPT.001	0.00	0	0	Non-t
2	DPT.002	0.00	0	0	Non-t
3	DPT.003	0.00	0	0	Non-t
4	DPT.004	0.00	0	0	Non-t
5	DPT.005	0.00	0	0	Non-t
6	DPT.006	0.00	0	0	Non-t
7	DPT.007	0.00	0	0	Non-t
8	DPT.008	0.00	0	0	Non-t
9	DPT.009	0.00	0	0	Non-t
10	DPT.010	0.00	0	0	Non-t
11	DPT.011	0.00	0	0	Non-t
12	DPT.012	0.00	0	0	Non-t
13	DPT.013	0.00	0	0	Non-t
14	DPT.014	0.00	0	0	Non-t
15	DPT.015	0.00	0	0	Non-t
16	DPT.016	0.00	0	0	Non-t
17	DPT.017	0.00	0	0	Non-t

Apply

Select

Back



Easy Programming Tool

EditHelp

Programming for departments

Dept. code:1

Text:DPT.001

Unit price:0.00

Group number:0

Commission group number:0

Item validation printing:Non-compulsory

Tare table number:No tare table

Scale entry:Inhibit

Registration type:Normal

Department type:Normal department

Type of unit price entry:Open only

HALO:17

Tax 1 status:Non-taxable

Tax 2 status:Non-taxable

Tax 3 status:Non-taxable

Tax 4 status:Non-taxable

Sign:Plus

Food stamp status:Ineligible

Age limitation:0

Apply

Select

Back

[Card Title]
This shows the heading of the current program selection.

[Apply Button]
Press this button to save the data temporarily, which will allow you to go to the next screen after modifying the setting.

[Back Button]
Press this button to go back to the previous card.

Serial Communication between ECR and PC

You can send and receive the program settings between the ECR and PC through serial communications. The Hardware requirements for serial communications are as follows:

- A personal computer
- A RS232C cable

<Wiring Diagram for the RS232C Cable>

