

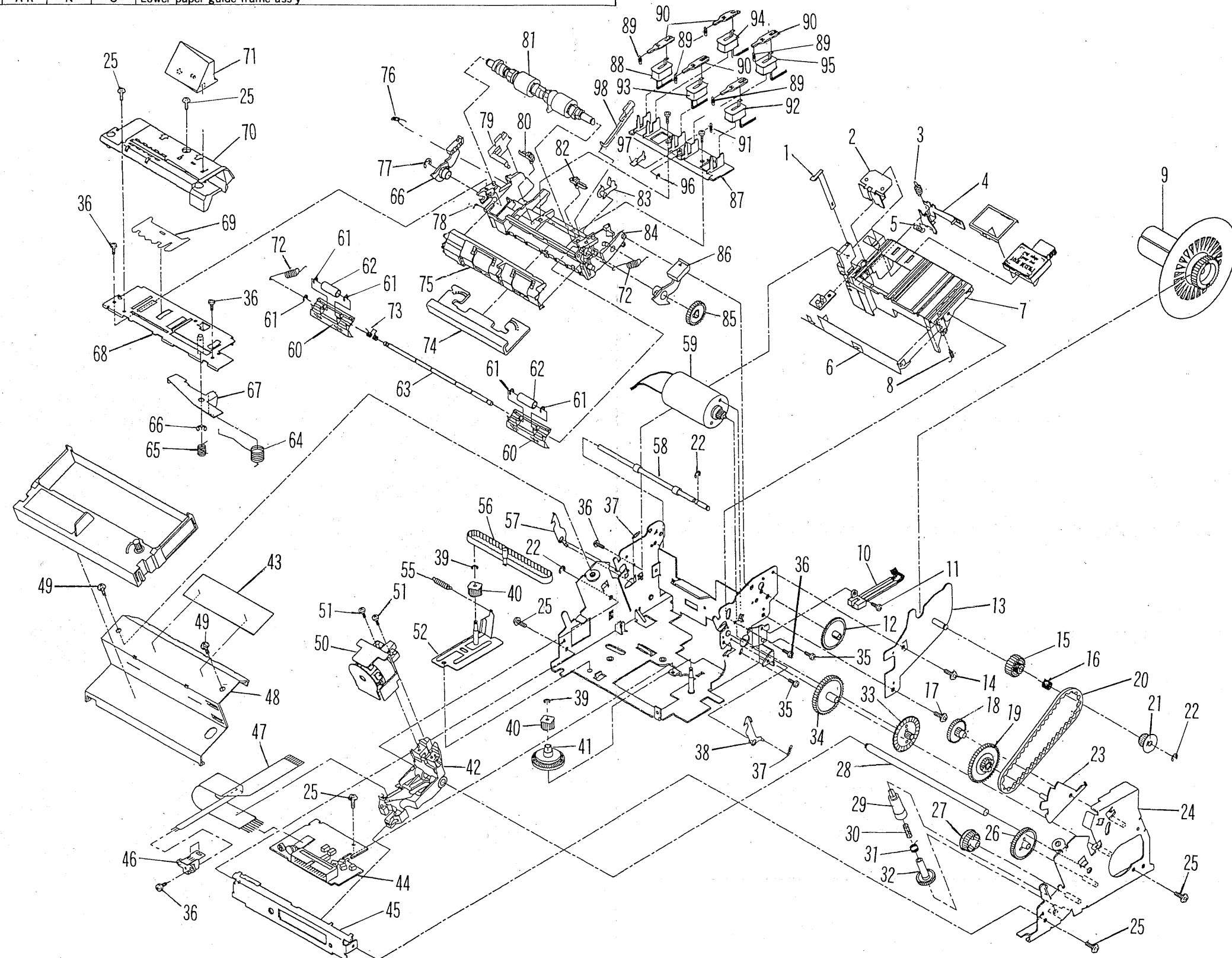
PARTS GUIDE

1 Mechanism etc.

NO.	PARTS CODE	PRICE RANK	NEW MARK	PART RANK	DESCRIPTION
1	00B1004102	AD	N	C	1st stamp drive lever
2	00BF240451020	AG		C	Stamp lever
3	00B1004106	AB	N	C	Stamp adjustment spring
4	00B1004103	AH	N	C	2nd stamp drive lever
5	00B1004105	AB	N	C	Stamp return spring
6	00B1004055	AK	N	C	Card stopper
7	00B1004553	AR	N	C	Lower paper guide frame ass'y

1 Mechanism etc.

NO.	PARTS CODE	PRICE RANK	NEW MARK	PART RANK	DESCRIPTION
8	00B1004076	AB	N	C	Paper guide reinforcement plate spring
9	00BF703301010	AQ		C	Paper rolling shaft
10	00B1004554	AT	N	E	Timing detector ass'y
11	00BB300204211	AA	N	C	C.B.Screw (M3×6)
12	00B1004081	AE	N	C	Paper extension roller gear
13	00B1004499	AN	N	C	Paper take-up frame sub ass'y
14	00BB040302311	AA		C	Cup screw (M3×4)
15	00BF750302030	AC		C	Paper take-up drive gear



Order	Content	Points to observe
5	<ul style="list-style-type: none">Move the print head unit again to side R and check whether the gap is within the regulation values.	<ul style="list-style-type: none">When the regulation values cannot be obtained, repeat the operations steps 2 and 3.

Adjustment B: R detection adjustment

- When the R detection board subset has been replaced, adjust the printing slip. Because the R detection board subset is fixed, carry out adjustments with the R detection adjustment plate.

Order	Content	Points to observe
1	<ul style="list-style-type: none">Insert paper and carry out printing (R side, J side)	<ul style="list-style-type: none">Check for printing slip a (R side, J side).
2	<ul style="list-style-type: none">Slide the R detection board to the left and right to adjust.	<ul style="list-style-type: none">Slide in directions ①, ② and ③ so that the measurements at a are 0).
3	<ul style="list-style-type: none">Use adhesive to secure the R detection board to the guide frame.	

(R side)

Main unit frame, R side

Printing direction

Main unit frame, J side
Is fixed.

Guide frame ass'y

R detection adjustment plate

Screw Lock

① ← → ②

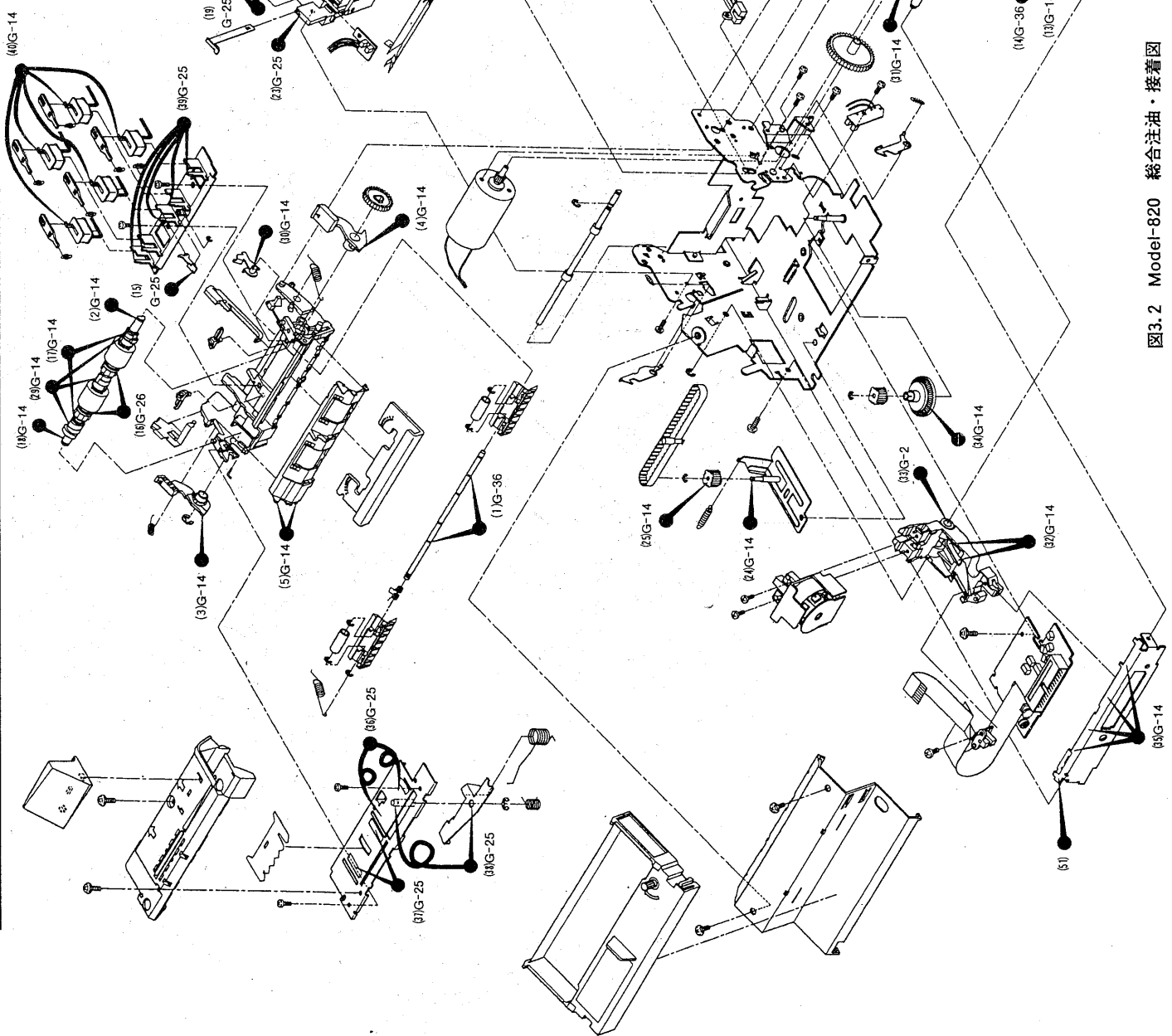


图3.2 Model-820 総合注油・接着図